



January 2011

Volume 1, Issue 1

Welcome to the First Edition of the IPPS Newsletter

Officers:

President: George King
 Vice President: Rich Ford
 Co-Secretaries: Mary Lou Hicks and Barb Drake
 Treasure: Tom Myers

Committee Chairs:

Exhibits: Tracey Maras
 Education: Barb Drake
 Membership/Editor: Sue Scaife

Inside this issue:

<i>Newsletter Debuts</i>	1
<i>SAA Classes</i>	1
<i>Classes and Workshops</i>	2
<i>Dues are Due</i>	2
<i>Member Spotlight</i>	3
<i>2011 Exhibits</i>	3
<i>Websites</i>	3
<i>Members</i>	4

As we welcome 2011, we also start the new year with the First Edition of the IPPS Newsletter.

This quarterly publication will be forwarded to all members of the Illinois Prairie Pastel Society free of charge via the Internet.

Regular features will include our Members List, classes and workshops, events and exhibits. A special section will be devoted to Members in the News and good deals on supplies and materials. Links to sites that relate to pastels, pastel societies and instructors will also be included.

Members may submit ideas

and material for inclusion. Brag about yourself, send your best work and let us know what you are doing.

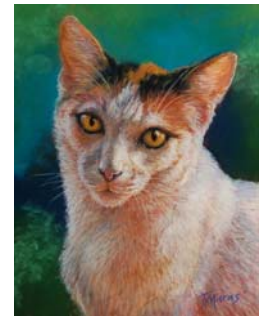
Additionally, each edition will feature one member with photos of paintings, artist statement, accomplishments and awards.

If you would like to be featured, please send your information to the Sue Scaife at suescaife@comcast.net. (Photos must be in jpg format)

Let us know what you want to see in the newsletter and we will continue to grow.



"Nenana River"
Sue Scaife, 2009



"Callie Sunshine"
Tracey Maras 2010

SAA Classes to begin

200 - Open Studio

Open studio is designed for **intermediate** and **advanced** painting & drawing students using any media. Work at your own pace on individual projects with the support & encouragement of fellow artists.

Facilitator: Sue Scaife
 Monday, 6:30 to 9:30 pm • January 10 to February 28 • 8 weeks
 Age Group: 18+
 Tuition: \$70 Members \$40

204 - Pastel Open Studio

Limitless creativity (and coffee!) flows through our spacious studio for the Monday morning pastel crew. So com on in, cozy up with your meg to paint with peers. There is no facilitator for this class, but registration IS necessary.

Monday, 9 am to Noon • January 10 to February 28 • 8 weeks
 Age Group: 18+
 Tuition: \$40 (Members and Non-Members)

Call the SAA at 523-2631 to register for these classes.

\$\$\$\$\$
DUES
ARE
DUE
\$\$\$\$\$

2011 Illinois Prairie Pastel Society Membership dues are payable during the month of January.

Please send your payment of **\$35** to Tom Myers, Treasurer at 512 Pleasant Court, Chatham, IL 62629

2011 IPPS Workshops & Classes

February 19th

Annual meeting and speaker

March (Saturday date to be determined)

DVD Workshop at Rita Williams

December (date to be determined)

Perspective—Janice Hahn, instructor



Michael Chesley Johnson, IPPS Springfield Workshop— 2010



I am not merely happy with producing a good painting. I strive to paint something that moves the viewer. Each one of us experiences the world around us differently, and I wish to share my vision with others. This is the gift that every artist gives."

Richard McKinley

Prairie Art Alliance Presents RICHARD MCKINLEY, PSA, PSWC-DP, NPS May 2 - 6, 2011

9:00 am to 4:00 pm (One Hour Lunch Break)

Cost: \$650.00 Nonmember

\$600.00 Prairie Art Alliance Member
(Juried or Associate)

Richard McKinley has been a professional artist for 38 years and has over 35 years of teaching experience. He is a Signature Member of the Pastel Society of America and Northwest Pastel Society; Signature Distinguished Pastelist with the Pastel Society of the West Coast and a member of the Oil Painters of America.

This workshop will cover the basics of sound representational painting. There will be daily demonstrations, critiques, and personal attention at individual easels.

For more information on Richard McKinley, please see his website at: www.mckinleystudio.com

To register or for more information on about this workshop contact the Prairie Art Alliance

Member Spotlight—George King

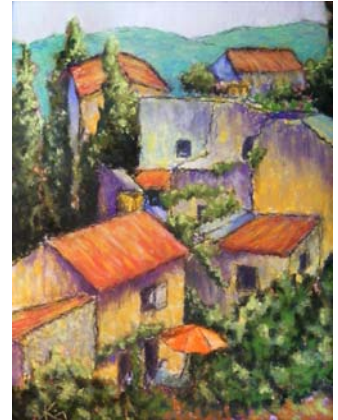
Founder and president of the Illinois Prairie Pastel Society, George King has been painting in earnest since retiring in 2003. As he says, "I had a 50-year painting drought," starting when he entered Arizona State University until his first watercolor class at the Springfield Art Association.

Largely self taught, he has taken a few workshops and classes and "eats, sleeps and dreams art. I can't make enough time for it, but I'm trying," he says. His subjects range from Tall Grass Prairie landscapes to scenes of his beloved Southwest, France, Maine and the Canadian Maritimes.

George's works are in private collections in Illinois, Canada, Mexico, France and can be seen in the Illinois Artisans Pro-

gram Gallery/Shops in Chicago, Rend Lake and the Illinois State Museum in Springfield. His specialty, Lincoln Holiday cards can be purchased in the gift shop at the Lincoln Home National Historical Site and Tinsley Dry Goods in Springfield.

Winner of many local awards for his paintings, George credits his "latecomer's success" to influence of artists he admires including Doug Dawson, Michael Chesley Johnson, Richard McKinley, Maynard Dixon, Georgia O'Keefe, Nellie Knopf, Sheri Ramsey and especially his SAA Pastel Open Studio colleagues -- the Monday Morning Gang. "The Monday morning group members are my strength, best critics, and wonderful friends...and I love them," he concluded.



"The Monday morning group members are my strength, best critics, and wonderful friends...and I love them."

George King



2011 Exhibits

April 30—Art in the Garden at Lincoln Memorial Garden

May (All month)—Chatham Library

June (All month)—Springfield Art Association

July (All month)—Trout Lily

Please note that firm exhibit dates will be forthcoming along with all necessary details.

August—Illinois State Fair

September—Carillon Art Spectacular, Washington Park

October—Lincoln Memorial Garden

November—Lincoln Memorial Garden

Great Pastel Websites

The Pastel Society of America
pastelsocietyofamerica.org
A great pastel magazine
pasteljournal.com

A great pastel only art store
dakotapastels.com
The best field pastel box for pastels
heilmandesigns.com

The good pochade box for field work
artworkessentials.com

Illinois Prairie Pastel Society

In 2006, six Springfield, IL, pastel artists joined together to form the Springfield Area Pastelists. By 2009 the group had grown to 20 members and formally organized as the Illinois Prairie Pastel Society, establishing By-Laws to guide the organization, and affiliating with the International Association of Pastel Societies.

The Illinois Prairie Pastel Society was established to:

- *Promote, stimulate and foster creative painting with pastels;*
- *Encourage and promote pastel artists in their growth and success;*
- *Provide instructive programs and demonstrations utilizing pastel media;*
- *Organize activities and exhibit opportunities for pastel artists;*
- *Encourage young pastel artists to work in pastels and exhibit their pastel works;*
- *Promote a fellowship with pastel artists in order to build a network for learning and professional opportunities; and*
- *Promote public awareness of pastels.*



*2702 Johnstone Road
Chatham, IL 62629*

Phone: 217-483-4286

E-mail: geezer222@comcast.net

Illinois Prairie Pastel Society Members



Tobi Abrams	Pat Kreppert
Molly Beaver	Gwen Lewis
Dee Belter	Tracey Maras
Rosemary Buffington	Tom Myers
Barb Drake	Connie O'Sullivan
Colleen Ferratier	Jo Powers
Rich Ford	Sheri Ramsey
Janice Hahn	Kathy Roseberry
Le Hayes	Tina Saunderson
Margaret Hazlett	Sue Scaife
Mary Lou Hicks	Rita Williams
George King	Rita Young
Pat Kittilstad	